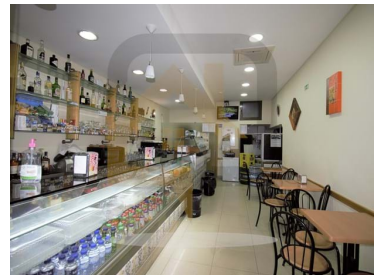




Alvalade - Commercial property



2

Bathrooms



100

Area (m²)

100 000 €

(EUR €)

Transfer of Coffee-Pastry and Restaurant Quotas in Alvalade

Transfer of Coffee-Pastry and Restaurant Quotas in full operation.

Located in a pedestrian street, next to schools in Alvalade

The space consists of two stores that communicate with each other.

One of the spaces functions as a café and pastry shop and the other as a restaurant.

The interior space has 55 seats, plus the terrace seats.

It has 2 bathrooms and a storage room.

It has been in existence for 20 years, which contributes to the already formed and stable customer portfolio.

Old lease agreement.

Schedule your visit now!



Pedro Antunes

916000662 ²

pedro.antunes@pwz.pt

T +351 916 000 662 ² · T +351 919 367 032 ² · E geral@pwz.pt

Rua José Ricardo, 2
AMI 22733

¹ (Call to national fixed network) | ² (Call to national mobile network)



Property Features

- Built year: 1950
- Floors: 1



Pedro Antunes

916000662 ²

pedro.antunes@pwz.pt

T +351 916 000 662 ² · T +351 919 367 032 ² · E geral@pwz.pt

**Rua José Ricardo, 2
AMI 22733**

¹ (Call to national fixed network) | ² (Call to national mobile network)